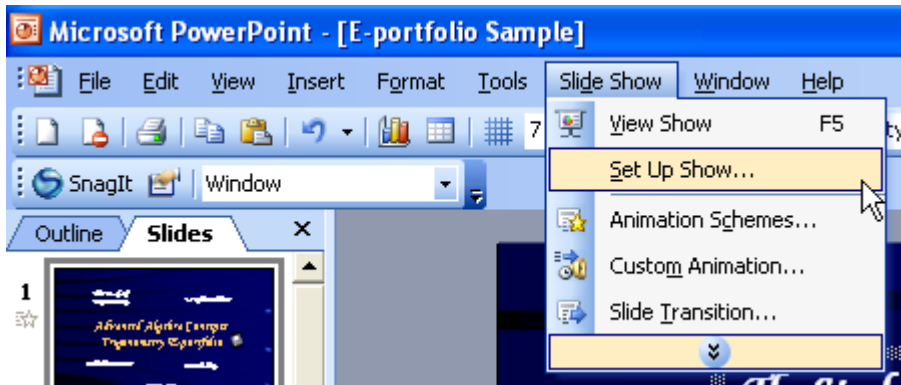


Browse At Kiosk Instructions

When using buttons to maneuver around a PowerPoint, you should prevent the user from being able to click anywhere in the presentation except for the buttons that are meant for navigation. This prevents the user from navigating to the wrong location.

1. Select **Slide Show > Set Up Show**



2. Select the **Browsed at a kiosk** option. Now – only buttons or hyperlinks will work for navigating in the PowerPoint.

